

SUNMI V2s Smart Mobile Terminal New

Your digital partner to leap forward.

Standard / Label & NFC / Label & Scanner / GMS / Industry Tailored

Beyond performance

As SUNMI's first smart terminal with SUNMI OS based on Android 11, V2s is equipped with an upgraded quad-core 2.0GHz CPU and 2G RAM +16G ROM memory and demonstrates enhanced operating speed*. The built-in 3500mAh removable battery enables a smooth and long-lasting experience.

*Compared to SUNMI V2.

Ticket and label printing

Dual printing for ticket and label printing, with SUNMI's label position auto-detection algorithm for a more accurate printing. A new movable fixator has been designed to enhance paper roll installation and make it more stable.

2D scan engine

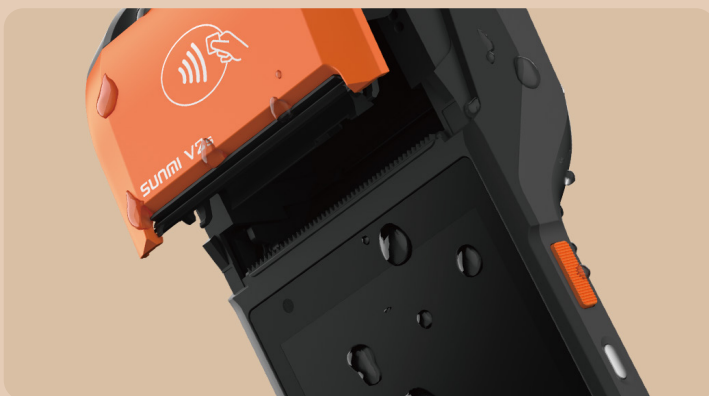
Upgraded to a professional 2D scan engine, to read 1D/2D barcodes even if scratched, folded or stained.

Strengthened protection

Rubber seals added to the edges of the paper bin, charging port, and earphone port help prevent water, oil and dirt damages.

Reinforced protection to resist 1.2m drop*.

*Data from Sunmi Lab



SUNMI V2s Tech Specs

General Configuration

Model Approved T5940 T5941	OS Android 11 Sunmi OS	Processor Quad-Core 2.0GHz	Display 5.5"HD+, 1440×720, 18:9 IPS	Audio 1*1W 95dB
Communication 4G/3G/2G	Wi-Fi 2.4G/5G IEEE 802.11 a/b/g/n/ac	Bluetooth Support Bluetooth 2.1/3.0/4.2 Support BLE	GPS GPS, AGPS	Battery Removable, Lithium Polymer battery 7.7V/3500mAh (equal to 3.85V/7000mAh)
Charger INPUT: AC 100~240V OUTPUT: 5V/2A	Dimensions (L*W*H) 219.1*80*17.8 mm	Weight 417g(including battery) 300g(without battery)	Drop Test 1.2m *Data from Sunmi Lab	Environment Operating temp: 0~45°C Storage temp: -40~70°C
Base (Optional) Multi-function Base	Industry tailored module Built-in professional module card slot provides industry module customization services (Please consult sales for details)			

Version	Standard	Label & NFC	Label & Scanner	GMS	Industry Tailored
Camera	Rear: 5.0MP Auto Focus with Flash LED Support 1D/2D	Rear: 5.0MP Auto Focus with Flash LED Support 1D/2D Front:2MP FF	Rear: 5.0MP Auto Focus with Flash LED Support 1D/2D Front: 2MP FF	Rear: 8.0MP Auto Focus with Flash LED Support 1D/2D Front: 2MP FF (Optional)	Rear: 5.0MP Auto Focus with Flash LED Support 1D/2D
Memory	2GB RAM+16GOM	2GB RAM+16GB ROM	2GB RAM+16GB ROM	3GB RAM+32GB ROM	2GB RAM+16GB ROM
NFC	Not Supported	Supports Type A&B card, Mifare card, Felica card; ISO/IEC 14443 and ISO15693 compliant	Supports Type A&B card, Mifare card, Felica card; ISO/IEC 14443 and ISO15693 compliant	Optional	Supports Type A&B card, Mifare card, Felica card; ISO/IEC 14443 and ISO15693 compliant
Scanner	Not included	Not included	2D barcode scan engine	Not included	Optional
PSAM slot	Not supported	PSAM *2	PSAM *2	Optional	PSAM *1
SIM & MicroSD Slot	Nano SIM *2 MicroSD *1	Nano SIM *2 MicroSD *1	Nano SIM *2 MicroSD *1	Nano SIM *2 MicroSD *1	Nano SIM *1 MicroSD *1
Printer	High speed, 58mm thermal printer Print speed: 80mm/s Paper roll: Φ40mm Support receipt printing	High speed, 58mm thermal printer Print speed: 80mm/s Paper roll: Φ40mm Support receipt printing Support label printing, Label paper specs: 30-58mm wide ≥20mm high, 2mm wide gap	High speed, 58mm thermal printer Print speed: 80mm/s Paper roll: Φ40mm Support receipt printing Support label printing, Label paper specs: 30-58mm wide ≥20mm high, 2mm wide gap	High speed, 58mm thermal printer Print speed: 80mm/s Paper roll: Φ40mm Support receipt printing Label printing (optional)	High speed, 58mm thermal printer Print speed: 80mm/s Paper roll: Φ40mm Support receipt printing
Button	1 * Power Button 2* Volume (+/-) Button	1 * Power Button 2* Volume (+/-) Button	1 * Power Button 2* Volume (+/-) Button Scan Left/Right	1 * Power Button 2* Volume (+/-) Button	1 * Power Button 2* Volume (+/-) Button
Interface	Support Type-C, Support OTG Support 3.5mm earphone jack	Support Type-C, Support OTG Support 3.5mm earphone jack	Support Type-C, Support OTG Support 3.5mm earphone jack	Support Type-C, Support OTG Support 3.5mm earphone jack	Support Type-C, Support OTG